

MASS OF THE IMMACULATE CONCEPTION

I. LORD, HAVE MERCY

II. GLORY TO GOD

III. HOLY, HOLY, HOLY

IV. ACCLAMATION OF FAITH

(A, B, C)

V. GREAT AMEN

VI. LAMB OF GOD

English Mass texts from *The Roman Missal* according to the Third
Typical Edition.

For use in the Dioceses of the United States of America.

Approved by the United States Conference of Catholic Bishops
and confirmed by the Apostolic See.

English Translation of *The Roman Missal*.

Copyright © 2011 United States Conference of Catholic Bishops,
Washington, D.C.

All rights reserved. Used with permission.

THE BASILICA SERIES OF SACRED MUSIC

Basilica of the National Shrine of the Immaculate Conception

400 Michigan Avenue, Northeast

Washington, D.C. 20017

United States of America

1-202-526-8300

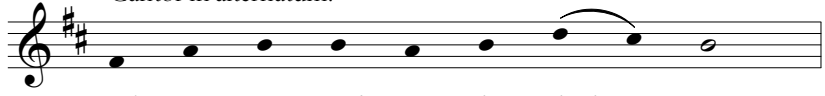
www.nationalshrine.com

www.facebook.com/nationalshrinemusic


II. GLORY TO GOD

Mass of the Immaculate Conception

Cantor in alternatum: Peter Latona, 2011




Glo - ry to God in the high - est




and on earth peace to peo - ple of good will.

Assembly in alternatum:



We praise you, we bless you, we a - dore_ you,



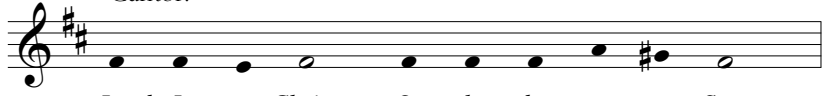
we glo-ri-fy you, we give you thanks for your great glo - ry,

Assembly:




Lord God, heaven - ly King, O God, al-might-y Fa - ther.

Cantor:



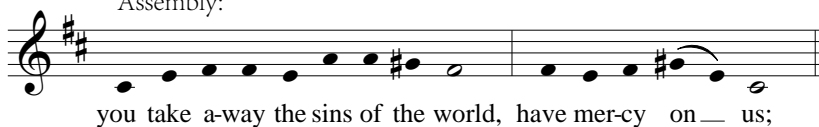
Lord Je - sus Christ, On - ly be - got - ten Son,



Lord God, Lamb of God, Son of the Fa - ther,

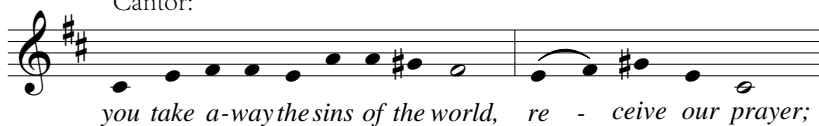
II. Glory to God / Mass of the Immaculate Conception

Assembly:



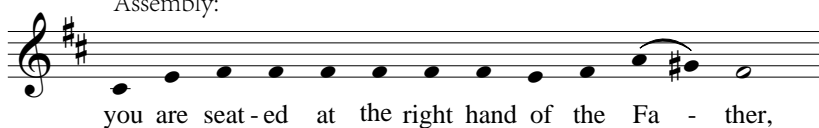
you take a-way the sins of the world, have mer-cy on us;

Cantor:



you take a-way the sins of the world, re - ceive our prayer;

Assembly:



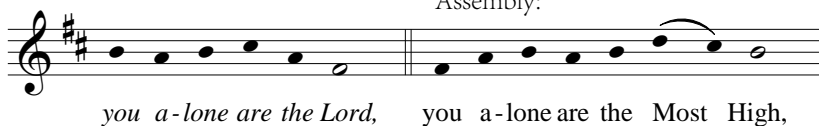
you are seat-ed at the right hand of the Fa - ther,

Cantor:



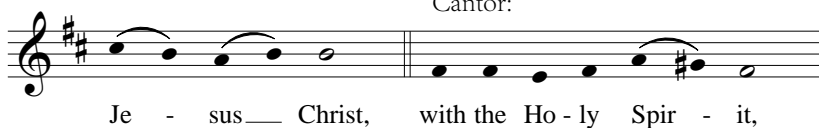
have mer-cy on us. *For you a-lone are the Ho-ly One,*

Assembly:

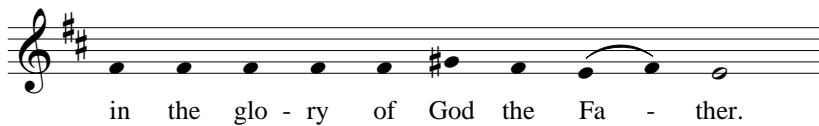


you a-lone are the Lord, you a-lone are the Most High,

Cantor:

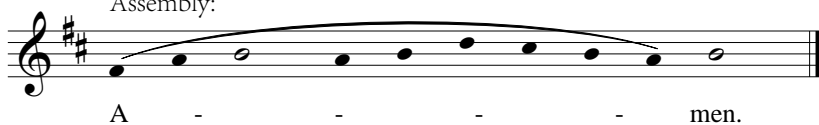


Je - sus Christ, with the Ho - ly Spir - it,



in the glo - ry of God the Fa - ther.

Assembly:

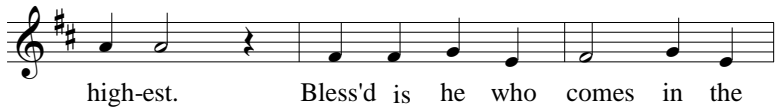
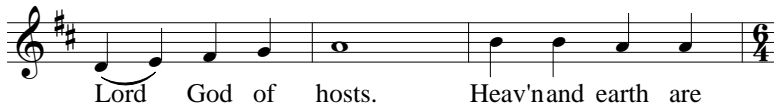
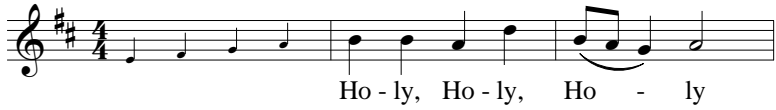


A - - - - men.

III. HOLY, HOLY, HOLY

Mass of the Immaculate Conception

Peter Latona, 2011

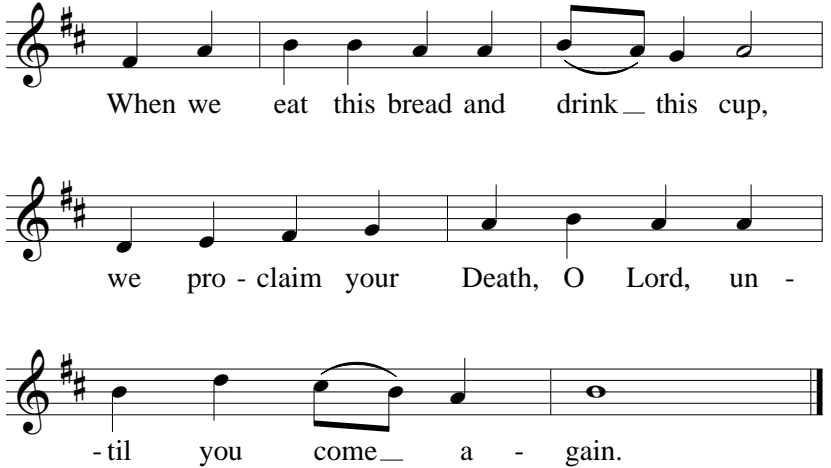


IV. MEMORIAL ACCLAMATIONS

Mass of the Immaculate Conception

A

Peter Latona, 2011



When we eat this bread and drink this cup,
we pro - claim your Death, O Lord, un -
-til you come a - gain.

Detailed description: This section consists of three staves of music in G major (one sharp). The first staff contains the melody for the first line of text. The second staff continues the melody for the second line. The third staff concludes the section with a final note and a double bar line.

B



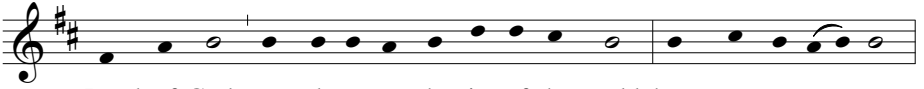
We pro - claim your Death, O Lord,
and pro - fess your Re - sur - rec - tion,
un - til you come a - gain.

Detailed description: This section consists of three staves of music in G major (one sharp). The first staff contains the melody for the first line of text. The second staff continues the melody for the second line. The third staff concludes the section with a final note and a double bar line.

VI. LAMB OF GOD


Mass of the Immaculate Conception

Peter Latona, 2011



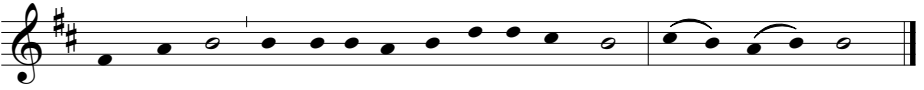
Lamb of God, you take a-way the sins of the world: have mer-cy on us.

The first line of musical notation is in treble clef with a key signature of one sharp (F#). It consists of two measures. The first measure contains a half note G4, a quarter note A4, a quarter note B4, a quarter note C5, a quarter note D5, a quarter note E5, a quarter note F#5, a quarter note G5, a quarter note A5, a quarter note B5, a quarter note C6, and a half note D6. The second measure contains a quarter note E5, a quarter note F#5, a quarter note G5, a quarter note A5, a quarter note B5, a quarter note C6, a quarter note D6, a quarter note E5, a quarter note D5, a quarter note C5, a quarter note B4, and a half note A4.



Lamb of God, you take a-way the sins of the world: have mer-cy on us.

The second line of musical notation is identical to the first line, consisting of two measures in treble clef with a key signature of one sharp (F#).



Lamb of God, you take a-way the sins of the world: grant us peace.

The third line of musical notation is in treble clef with a key signature of one sharp (F#). It consists of two measures. The first measure contains a half note G4, a quarter note A4, a quarter note B4, a quarter note C5, a quarter note D5, a quarter note E5, a quarter note F#5, a quarter note G5, a quarter note A5, a quarter note B5, a quarter note C6, and a half note D6. The second measure contains a quarter note E5, a quarter note F#5, a quarter note G5, a quarter note A5, a quarter note B5, a quarter note C6, a quarter note D6, a quarter note E5, a quarter note D5, a quarter note C5, a quarter note B4, and a half note A4. The piece ends with a double bar line.