

# Honoring Our Past, Building Our Future

## COMMONLY ASKED QUESTIONS

Vol. 1

March 8-9, 2014

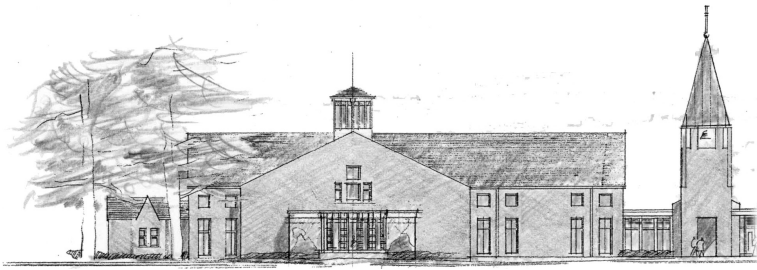
---

### **Why is the parish conducting a campaign now?**

St. Mary of Sorrows Parish is an incredibly active parish hosting a wide variety of ministry groups and activities. However, the parish is desperately in need of additional space for classes, meetings and activities. While the primary purpose of the *Honoring Our Past, Building our Future* Campaign is the construction of a new church an immediate secondary benefit will be an increase in available space. Once the new church is dedicated and open for use, the existing worship space will be renovated and divided into classrooms, meeting rooms, and activity space. Furthermore, if the parish is able to raise enough money to include a finished lower level to the new church, then many of the activities currently taking place in Farrell Hall (coffee & donuts, spaghetti dinners, etc) will take place at the new church, making Farrell Hall more available as well.

### **If space is an issue, and the Masses are not full, why is the parish seeking to build a church rather than a multi-purpose building?**

There are several reasons why a new church building is the focus of the Master Plan rather than a multi-purpose building. **First**, at the time of the development of the Master Plan and with the purchase of the Mack property, the eventual construction of a dedicated church building was the primary focus. The need for a new church was originally driven by the need for additional seats in the church. The need for a new church was revalidated in 2007 when the need for additional meeting/classroom space would be best accomplished with the building of a new church with a lower level and the existing worship space be renovated to fit the growing needs for additional space. **Secondly**, a significant number of parish families have consistently expressed a desire for a dedicated church and some families have joined other parishes that do have a dedicated church. **Thirdly**, many parishioners, through the *Continuing The Mission* Campaign, have already donated money toward the construction of a new church. The parish has a moral and legal obligation to use those donated funds for the specific purpose for which the donation was intended. **Finally**, while the current worship space has served the parish well for many years, a new church building will provide the parish with something more than simply a space to gather for the Holy Sacrifice of the Mass. Just as was the case with the great Cathedrals of the Middle Ages, a church building is intended to speak to the world around it, conveying in its architectural style and beauty, the transcendent truth and glory of God. We currently live in a society reeling from the rotten fruits of secularism and rationalism, in which anxiety, cynicism, depression, and despair, especially among our young people in college, high school, and even elementary school. We live in a society that is seeking a transcendent encounter with the God who loved them into existence and who has not abandoned them but continually calls them to a deeper encounter with Him. A church building, with an architecture inspired by Catholic theology, is intended to be a conduit for this encounter between the human and the divine.



Honoring Our Past,  
Building Our Future  
**COMMONLY ASKED  
QUESTIONS**

Vol. 2

March 8-9, 2014

---

**What were the results of the Parish Planning Study conducted last June?**

In June of 2013 St. Mary of Sorrows contracted with The Moran Company to conduct a study to determine the feasibility and level of support for a potential capital campaign to raise money for a new church building. The methodology used by The Moran Company to solicit feedback from parishioners by way of personal interviews or a survey questionnaire that was made available at all the Masses on the weekend of June 15-16, 2013. A total of **20** families were personally interviewed and **872** families responded to the survey questionnaire for a total of **892** families participating in the Planning Study. This represents **29.9%** of the **2,980** registered families. This level of participation is consistent with the level of participation in most planning studies in Catholic Parishes.

Questionnaire

Key questions and responses to the study were as follows:

Q: This project has been many years in the making and we are now ready to begin. Are you willing to support the completion of a new church?

A:    **Yes:**                    **551 (62%)**  
      **No:**                     **97 (11%)**  
      **Not Sure:**            **238 (27%)**

Q: As far as your own financial support, can we count on you to make a pledge over a three year period to the campaign?

A.    **Yes:**                    **386 (44%)**  
      **No:**                     **131 (15%)**  
      **Not Sure:**            **360 (41%)**

The recommendations and conclusions provided by The Moran Company are as follows:

“As a result of the Planning Study, combined with the experience of the firm, The Moran Company **recommends** that St. Mary of Sorrows Parish embark immediately on a Capital Fund Campaign to provide the necessary funds to complete the new church.

The results of the Planning Study indicate that St. Mary’s is in a favorable position to conduct a capital campaign to address its needs. This is supported by personal visits, statistical results of the study and the positive feeling study respondents expressed for the manner in which the parish is regarded and meets the needs of parishioners. **Therefore, it is The Moran Company recommendation that St. Mary of Sorrows Parish commence a capital campaign.”**

## What happened to the money from the first campaign?

The building fund for the new church has received income from several sources. The initial two sources were the *Continuing the Mission* Parish Campaign in 2001 and the *Rooted in Faith* Diocesan Campaign. The money raised from these two sources also generated a significant amount of interest. The breakdown is as follows:

<i>Continuing the Mission</i> Campaign:	\$2,581,541
<i>Rooted in Faith</i> Campaign:	\$ 359,781
Interest	\$ 418,278
<b>Total</b>	<b>\$3,359,600</b>

Some of the monies listed above were used for the following projects related to the Master Plan:

- ◆ An approved Special Permit Amendment (SPA) for a new church, expansion of the existing building and expansion of the parking lot.
- ◆ Construction of the new parking lots, lighting, utility extension, fencing, landscaping, and storm water management pond.
- ◆ Schematic design and alternate designs for the new church and parish hall.

The financial breakdown is as follows:

### Expenses:

Contractors	-\$1,895,026
Architect/Engineers	-\$ 181,499
Attorney/Fees	-\$ 112,865
<b>Total</b>	<b>-\$2,189,390</b>

### Current Building Fund:

The expenses left the Parish Building Fund with a balance, as of 7/31/13, of **\$1,170,210**. This amount has been supplemented with additional donations and deposits from other parish sources bringing the current balance of the Building Fund, as of 2/24/14, to **\$1,500,000**.

---